



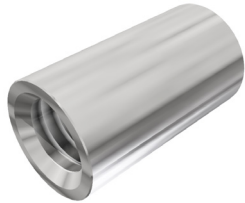
Look for this sticker on hardware bags



Level RodTite Installation Guide

Included In Kit

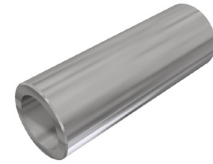
RodTite Receivers



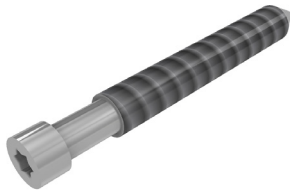
RodTite Turn Buckles



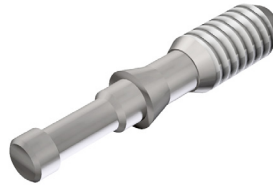
RodTite Covers



RodTite Mounting Screws



RodTite Threaded Crimp Fittings

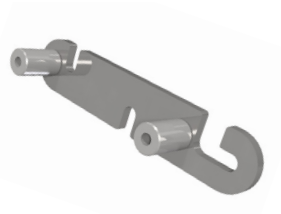


Tools Needed from Rod Rail Installation Kit

Multi-Function Hand Tool



Custom RodTite Wrench



Deburring Tool



T-25 Torx Bit



Other Tools and Supplies Needed for Installation

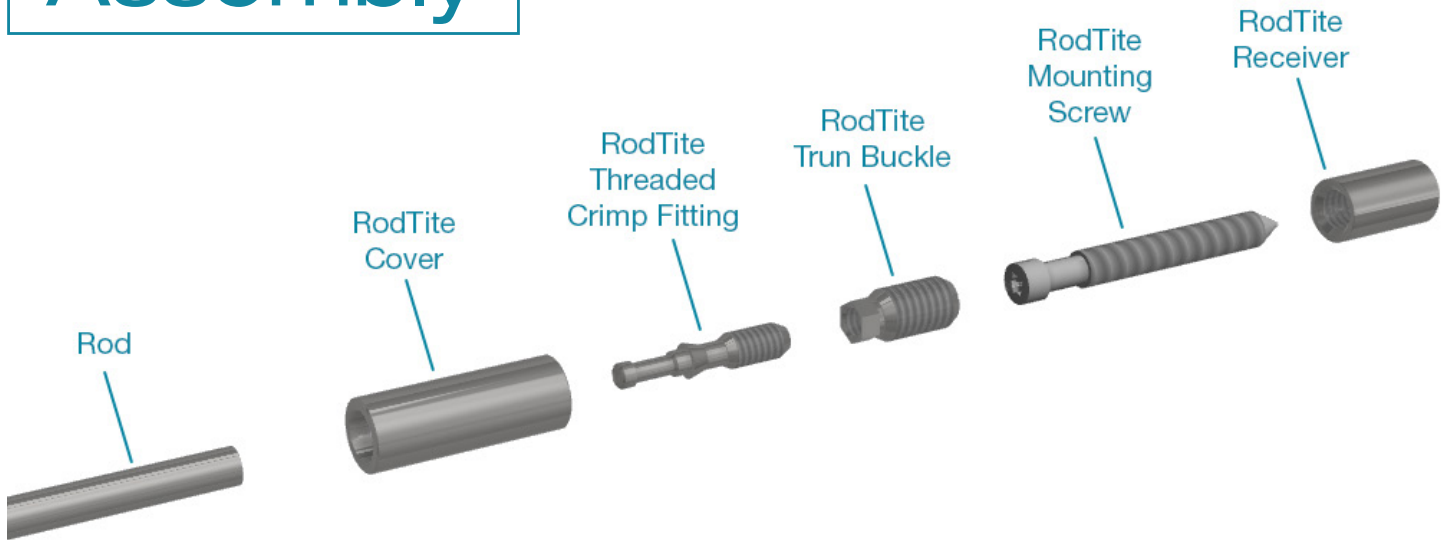
- Drill
- 1/8" Drill Bit (For RodTite Mounting Screw)
- 5/16" Drill Bit (For Drilling Posts)
- 1/2" Forstner Bit (Optional)
- Pliers with Rubber Covered Tips
- Vice Grips with Rubber Covered Tips

- 2 Squeeze Clamps
- Tape Measure
- Painter's Tape
- File
- Pencil

Things to Know Before You Get Started

- Your handrail must be installed before you begin installation of Rods.
- For a Building Code compliant system, do not exceed 4 feet between posts
- For a Building Code compliant system, do not exceed 50 feet total run length
- The RodTite Turn Buckles & Covers are both left-hand threaded, while the threaded crimp fittings are right-hand threaded
- RodTite Kits are designed to fasten into wood with a Janka Rating of 690 and above

Assembly



Level RodTite Installation Steps

1

Apply a strip of painter's tape to the center of the post to protect the finish.

Run a pencil line down the center of the post.

2

Measure $3^{5}/_{16}$ " from the bottom of the handrail to mark the top hole location.

This location will be used as a reference point for the next hole. And that hole, a reference for the following one, etc.



Building Code: The space between the handrail and top rod, between each rod, and between the bottom rod and the floor, must be less than 4"

Level RodTite Installation Steps (Continued)

3

A. Center one of the holes of the Custom RodTite Wrench on the top hole you marked in Step one.

B. With the wrench hanging down as shown, mark the next hole placement.

C. Continue down the post using the holes in the wrench to produce a $3\frac{1}{8}$ " gap between marked locations.

4

$\frac{1}{8}$ " Drill Bit

2"

5

T-25 Torx Bit

6

Measure the distance between posts

For Surface mounted RodTite Receivers, Subtract $3\frac{1}{2}$ " from that measurement.

For flush mounted RodTite Receivers, (Step 5) add $\frac{1}{4}$ " to that measurement

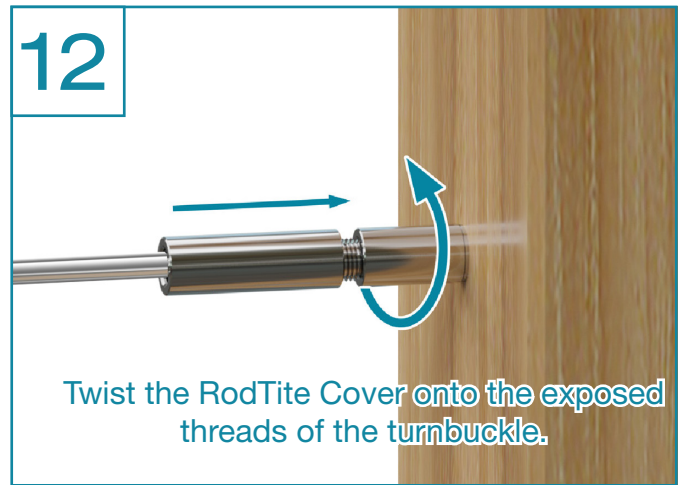
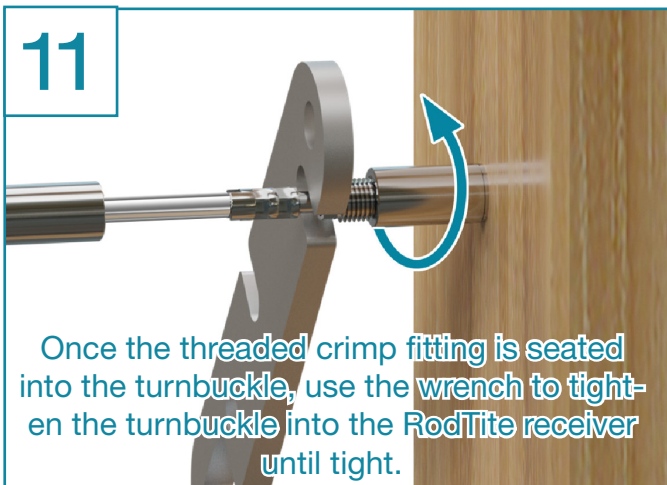
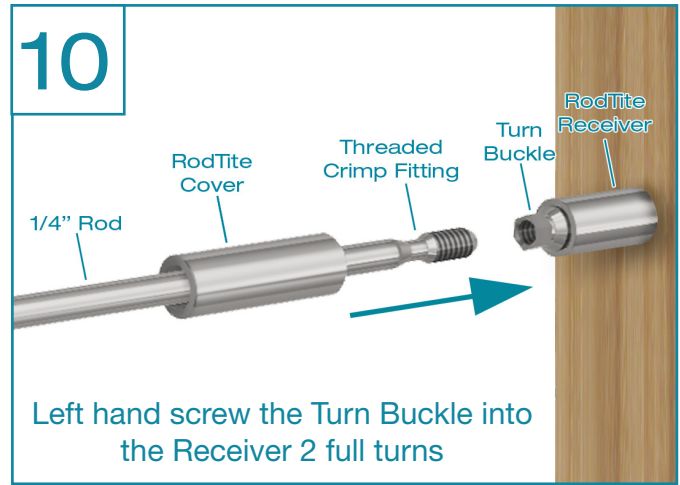
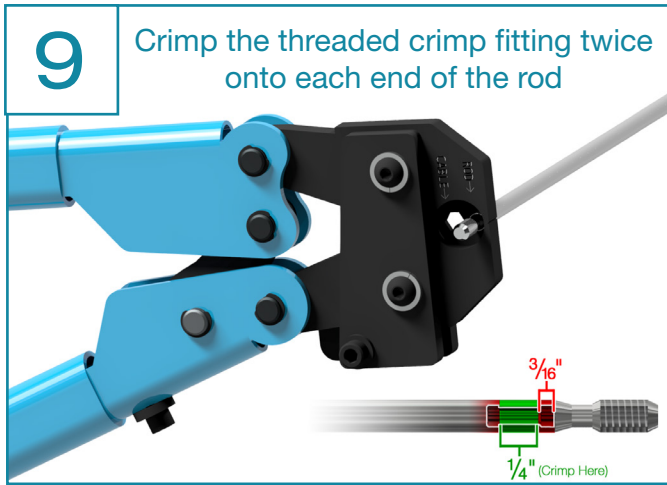
This will be the "Needed Rod Length"

7

Cut the rod to the "Needed Rod Length"

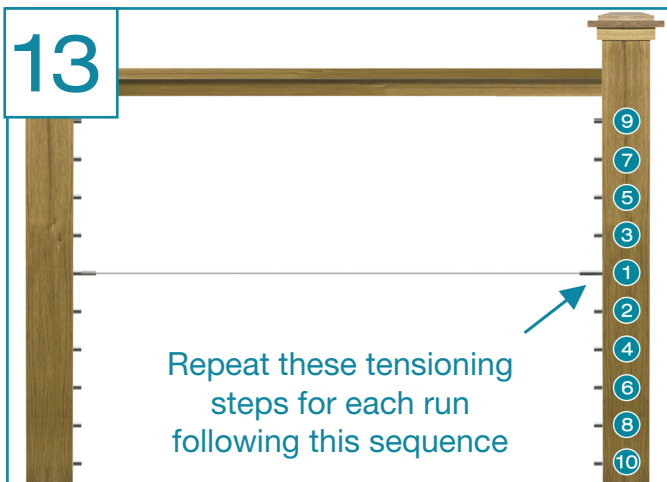
Use the supplied deburring tool to remove any rough edges from the newly cut rod.

Level RodTite Installation Steps (Continued)



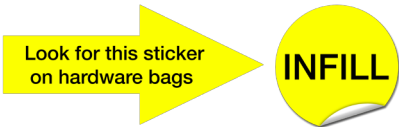
Note

To help prevent the rod from spinning, you will need to use rubber sleeve and pliers to hold the rod so the turnbuckle pulls in the threaded crimp and itself rather than spinning the rod. If you are finding that is not working, then you can use Threadlocker Blue to help prevent them from spinning.



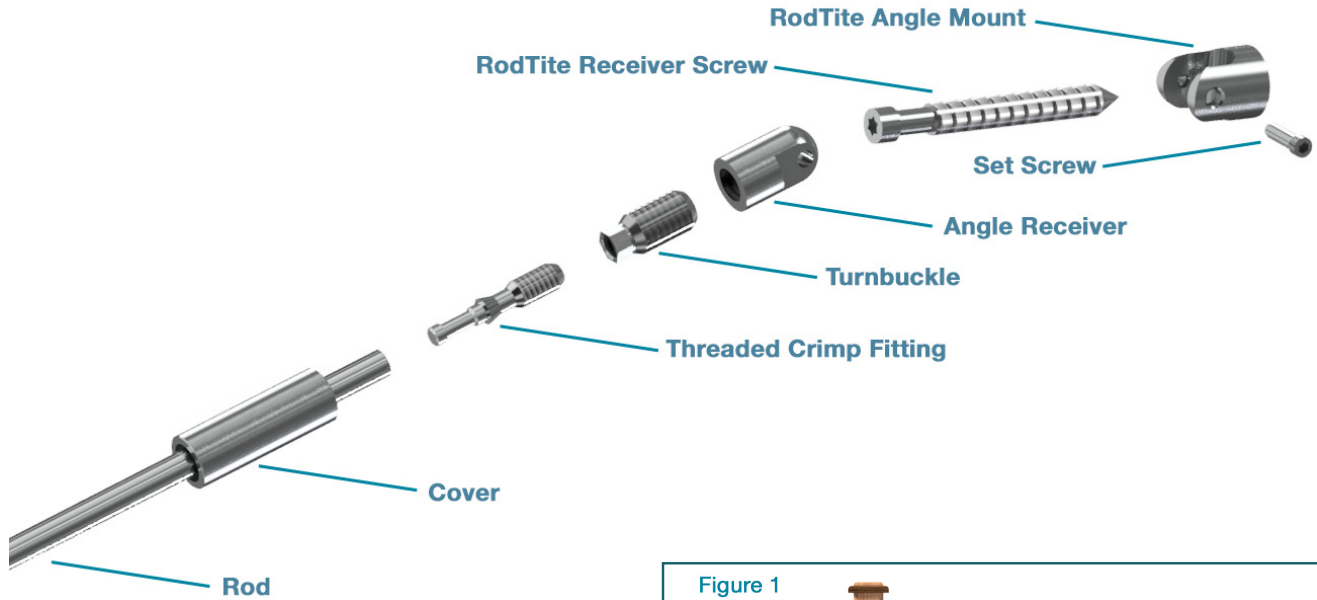
Congratulations!
You're done with this section.

We'd love to see your work! Snap a few pics with your phone and send them to pictures@viewrail.com. Thanks for choosing Viewrail. Enjoy your new installation!



Angle RodTite Installation Guide

Angle RodTite Assembly



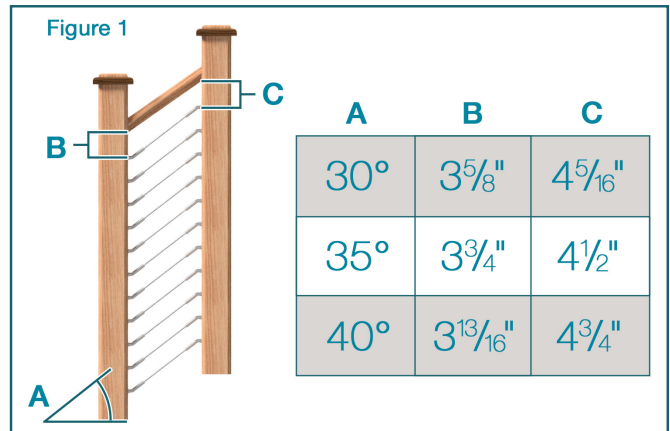
Tools Needed from the Installation Kit



Multi-Function Hand Tool



Deburring Tool



Other Tools and Supplies Not Included in the Installation Kit

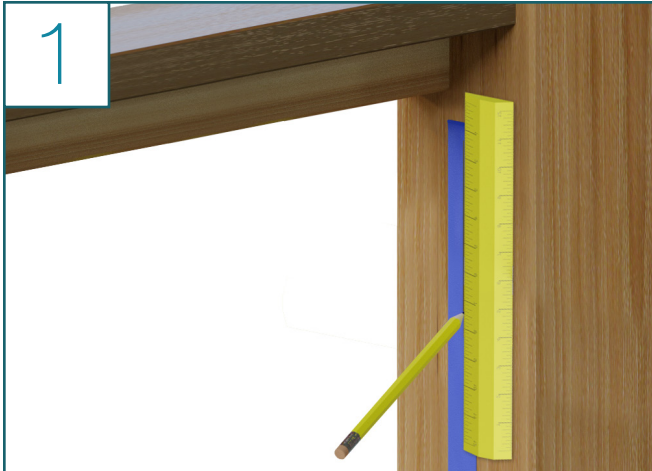
- Drill
- 1/8" Drill Bit
- T25 Torx Bit
- Tape Measure
- Angle Grinder *(Available Through Viewrail)*
- DriveTite Wrench Assembly Tool *(Available Through Viewrail)*

Things to Know Before You Get Started

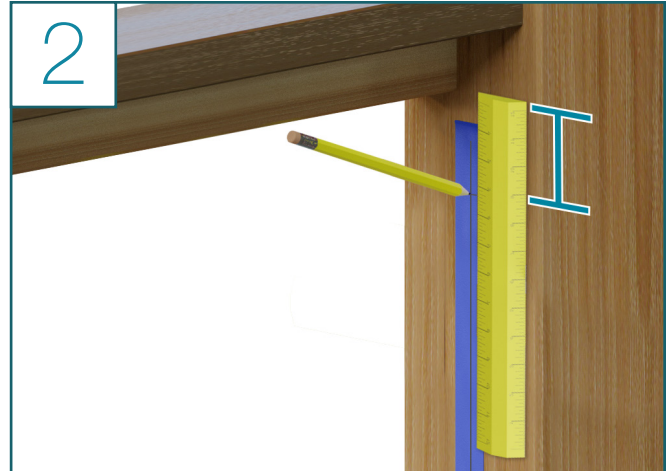
- Ensure that your posts and handrail are properly installed before beginning your rod installation
- For systems using both wood post as well as Viewrail metal posts, match the hole spacing from the Viewrail metal posts
- Tip: Open your rod spool inside a 5 gallon bucket. This will help contain the rod as it expands.
- It is suggested that this be a 2 person project

Visit our YouTube channel to watch helpful installation videos
youtube.com/viewrail


Angle RodTite Installation Steps

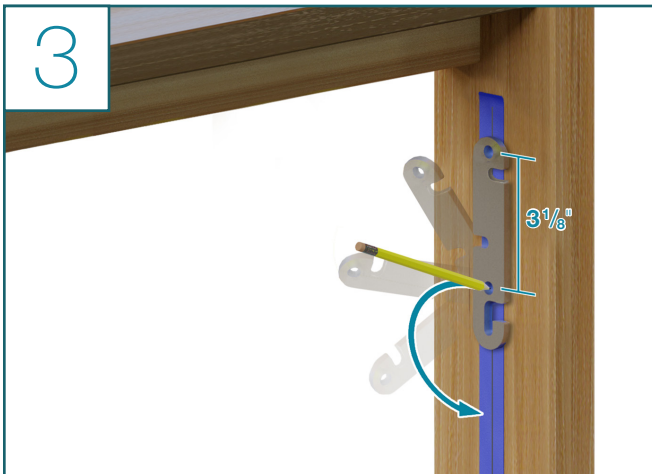


- Apply a strip of painter's tape vertically in the center of the post for marking and to protect the finish
- Run a pencil line down the center of the post

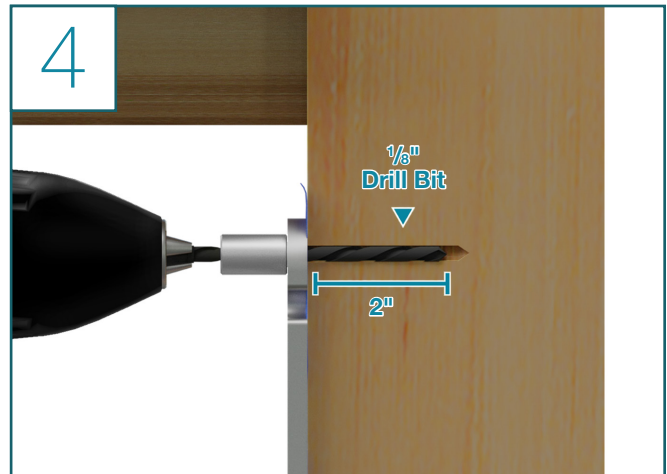


- To determine your RodTite locations, refer to **Figure 1** on the previous page
- Column A refers to the angle of your stairs
- Column B shows how far down you need to mark from the underside of the handrail on the lowest post on the run
- Column C shows how far down you need to mark from the underside of the handrail on the highest post on the run
- Once you have your B and C marks, each of the remaining holes will be spaced $3\frac{1}{8}$ " down

 **Building Code:** The space between the handrail & top run of infill, between each run of infill, and between the bottom run of infill & the floor, must be less than 4"

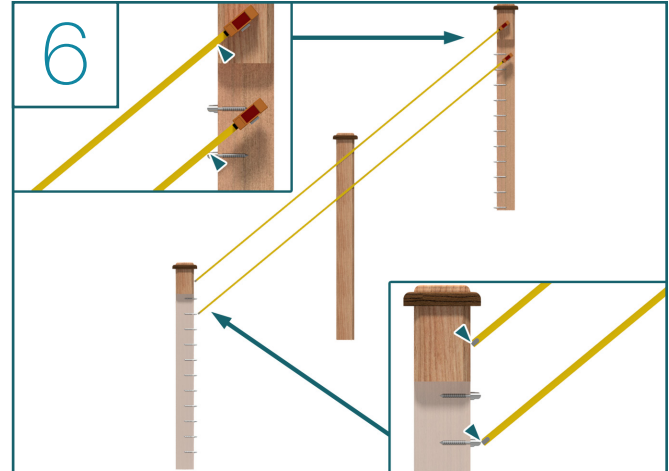
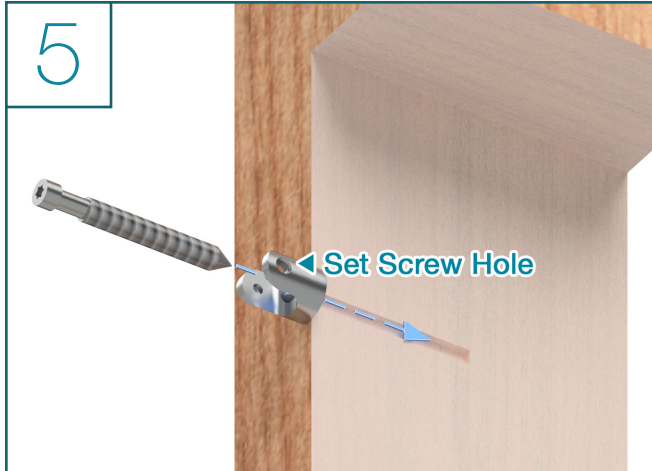


- If you purchased the Custom RodTite Wrench, center one of the holes of the wrench on the top hole you marked in Step one
- With the wrench hanging down as shown, mark the next hole placement
- Continue down the post using the holes in the wrench to produce a $3\frac{1}{8}$ " gap between marked locations



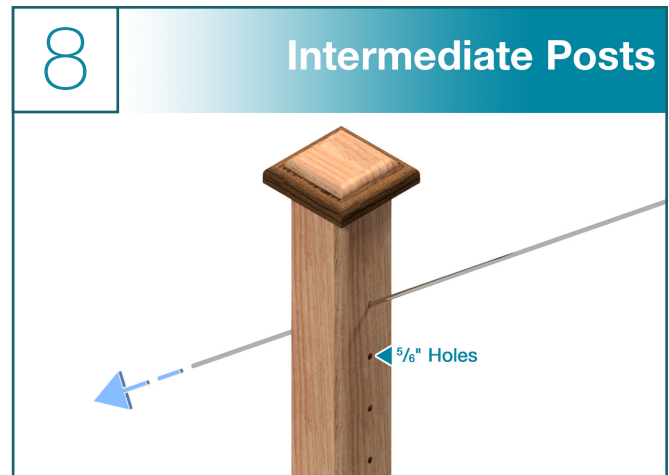
- Using a $\frac{1}{8}$ " drill bit, drill a 2" pilot hole into the post for each run of rod you marked in Step 3

Angle RodTite Installation Steps (Continued)



- Using the T-25 Bit, fasten the RodTite Screw through the RodTite Angle Mount and into the post
- Make sure the ears are vertical. You will likely have to hold the Angle Mount to keep it from turning.
For elevated areas, it would be best to keep the set screw hole of the Angle Mount on the inside of the run where it is easily accessed
- Fasten tightly

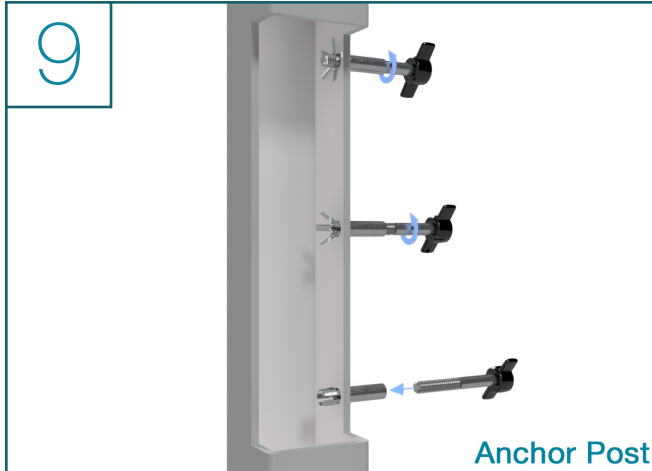
- There are two ways to measure for your rod cut length
- Measure from the inside face of each end post and subtract 4 1/8"
- Because the Angle Mount could depress into the wood when tightening, you can also measure from the face of each Angle Mount and subtract 2 3/4"
- These two measurements should equal the same cut length



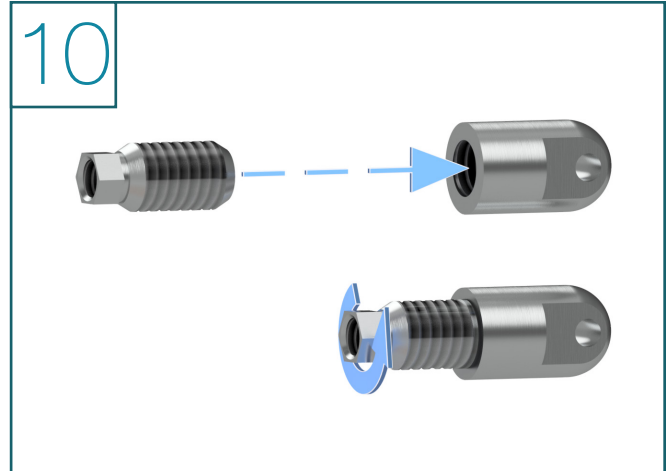
- Cut rods to the modified measurement from Step 6
- Use the deburring tool to remove any rough edges

- If you have any intermediate posts on the run, drill out the pass through holes to the diameter desired
The rod is 5/32" thick
If you are using the Wood Angle Insert Sleeves, these require a 1/2" hole
- Run your rod through any intermediate holes
- Apply any intermediate post hardware at this point

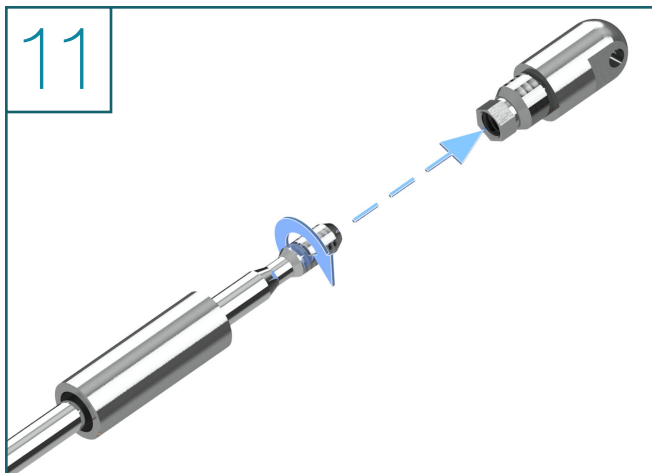
Angle RodTite Installation Steps (Continued)



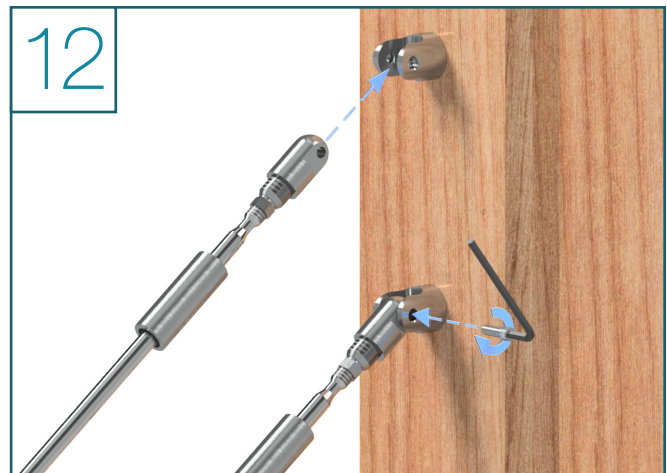
- Insert the Treaded Crimp Fitting into one end of the rod
- Crimp the fitting near the Crimp Fitting Flange
- Rotate the rod and Crimp Fitting 90° and crimp again



- Step 10-12 should be on one side of the run only
- Thread the Turnbuckle into the Angle Receiver 2 turns

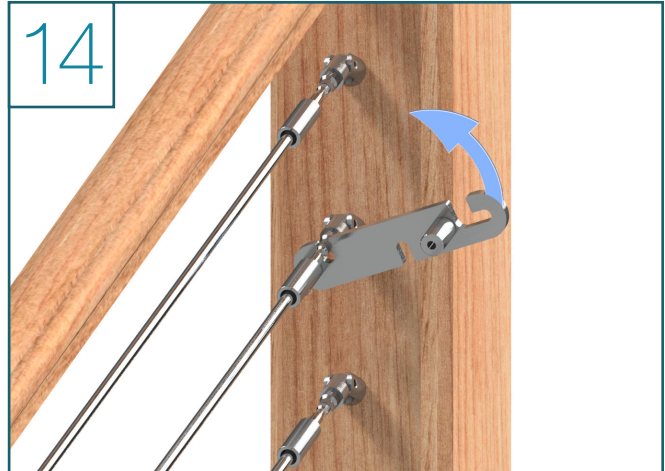
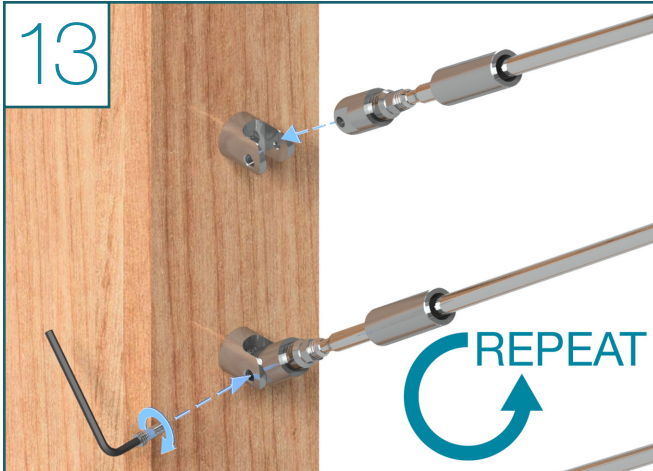


- Thread the Turnbuckle/Receiver combo onto the Threaded Crimp Fitting about 7 turns
- There should be 2 threads visible on the Threaded Crimp Fitting still
- During the process, make sure the Turnbuckle is not threading further into the Receiver



- Take the assembled end and put the Angle Receiver inside the Angle Mount so that the set screw holes line up
- Using the 7/64" Allen wrench, tighten the Set Screw through each
- Complete steps 8-10 for each rod on this side of the run

Angle RodTite Installation Steps (Continued)

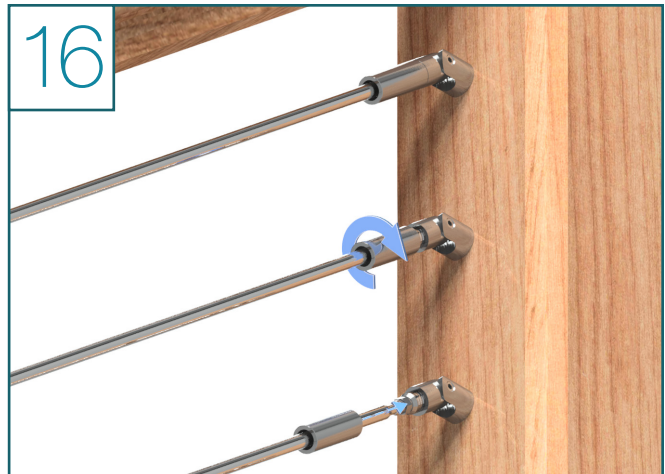
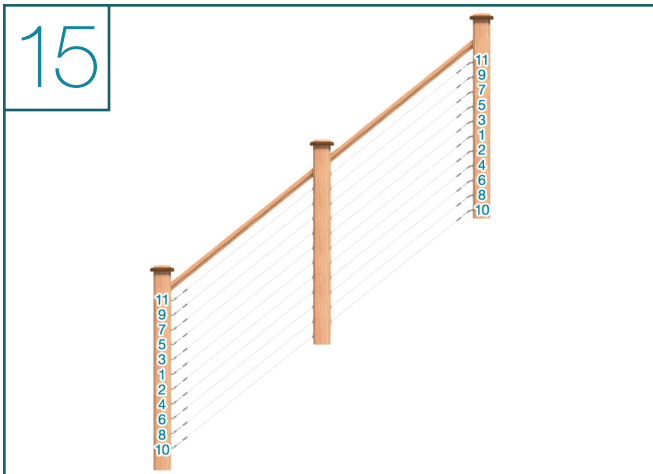


- Repeat steps 10-12 for each rod on the other side of the run
- Since one end is already fastened, if the cut length is slightly too long, tighten the threaded crimp fitting or turnbuckles marginally until the set screw fits
- If the cut length is too short, loosen the threaded crimp fittings slightly until the set screw fits

- Once both ends are attached, use the RodTite Wrench to tighten the Turnbuckles' hex heads
- As the Turnbuckles tighten into the Receivers, because of the opposite threading, they will also pull in/tighten their corresponding Threaded Crimp Fittings
- Refer to Step 15 for the correct tightening pattern

Note

To help prevent the rod from spinning, you will need to use rubber sleeve and pliers to hold the rod so the turnbuckle pulls in the threaded crimp and itself rather than spinning the rod. If you are finding that is not working, then you can use Threadlocker Blue to help prevent them from spinning.



- Tighten each side in the represented sequence
- You can tighten one side and then the other until snug

- Once the Turnbuckles are tightened, remove any tape and slide each Cover up to the Turnbuckle
- Thread this onto the remaining exposed threads of the Turnbuckles for a tight seam

Congratulations! You're done with this section.

We'd love to see your work! Snap a few pics with your phone and send them to pictures@viewrail.com. Thanks for choosing Viewrail. Enjoy your new installation!