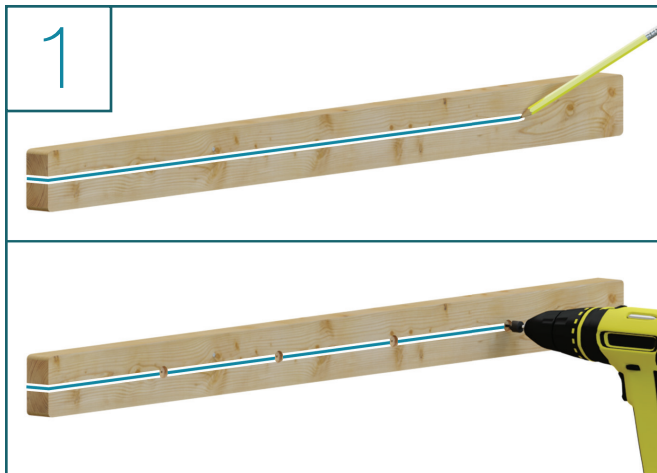


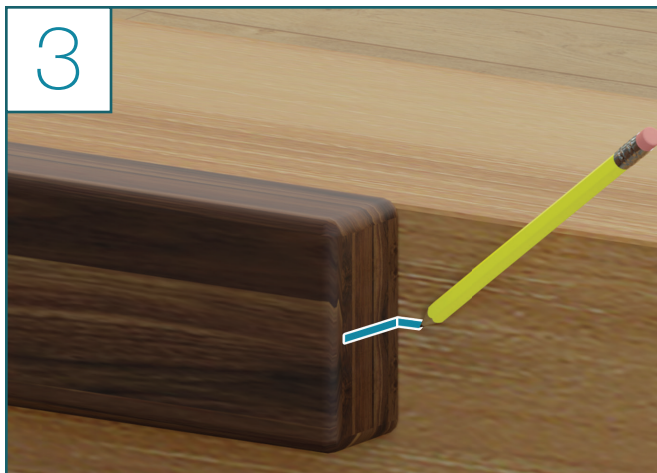
# Optional Nosing Installation Steps



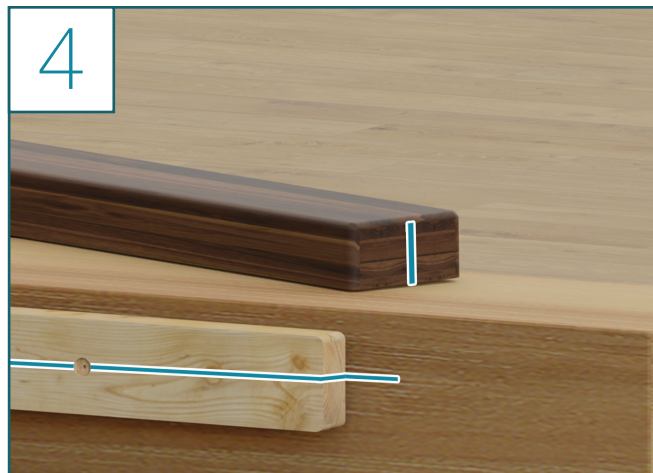
- Moving on to the nosing installation, mark a center line on the nosing mounting block
- Using a  $\frac{3}{16}$ " bit, drill four evenly spaced holes along the center line
- Using the  $\frac{11}{16}$ " Forstner bit, drill in the same spots  $\frac{3}{8}$ " deep. This will counter sink the mounting screws
- Do not mount at this point



- Mark a center line on the side of the nosing
- Position, level & hold the nosing in the desired location

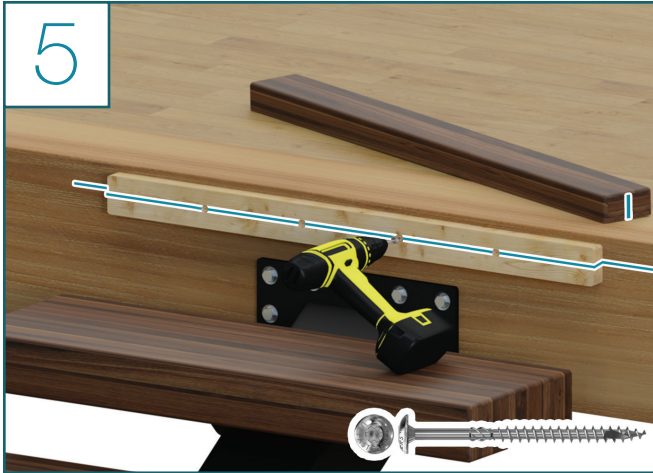


- Transfer the center line to the headboard



- Align the mounting block center line with the center line mark you drew in the previous step

### Nosing Installation Steps (Continued)



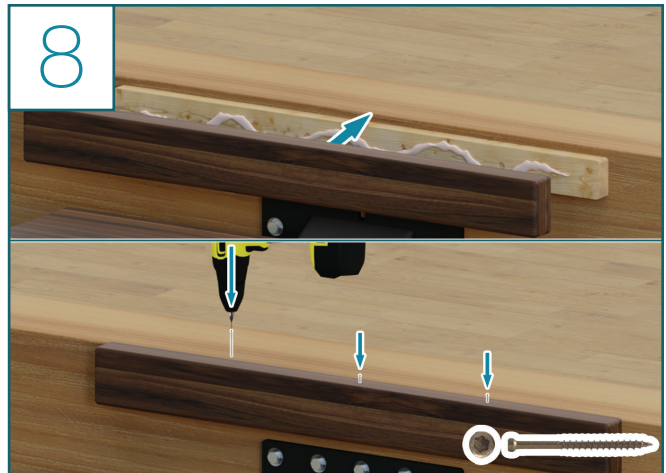
- Mount the nosing blocking using a single provided  $\frac{5}{16}$ " x 6" RSS screw in one of the two center holes



- Adjust until level
- Carefully remove the Nosing as to not bump the Mounting Block
- Fasten the remaining  $\frac{5}{16}$ " x 6" RSS screws



- Apply wood glue to both the Mounting Block and the inside cavity of the Nosing



- Press the nosing firmly into place and use the T-10 bit to fasten #8 x 2" trim screws, holding the nosing cover in place

## Congratulations! You're done with this section.

We'd love to see your work! Snap a few pics with your phone and send them to [pictures@viewrail.com](mailto:pictures@viewrail.com). Thanks for choosing Viewrail. Enjoy your new installation!